

Telecom Convergence The Future of Integrated Services

In today's rapidly evolving digital landscape, the concept of telecom convergence has emerged as a pivotal force in redefining connectivity and service delivery. This innovative integration of telecommunications technologies, networks, and services is driven by key technologies like mobile, broadband, artificial intelligence (AI), and the Internet of Things (IoT).

Telecom convergence seeks to unify diverse technologies into cohesive, seamless experiences, enhancing connectivity and opening new horizons for both consumers and businesses alike. By focusing on end-to-end service delivery, telecom providers can deliver enhanced customer offerings while increasing operational efficiency, setting a new standard in the telecommunications industry.

The Building Blocks of Telecom Convergence

Mobile and Broadband Integration

The convergence of mobile and broadband technologies has been a key driver in the evolution of the telecom industry. This integration has facilitated the development of high-speed, ubiquitous internet access, laying the groundwork for a connected world. And it's only gotten better with the introduction of 5G technology. The rollout of fixed wireless access (FWA) using 5G technology is a prime example how mobile and broadband networks can be merged to provide high-speed internet access in areas lacking traditional wired connections.

The Role of AI

AI plays a transformative role within this ecosystem. From optimizing network operations and traffic management to enabling predictive maintenance and offering personalized customer services, AI's capabilities are vast. It not only improves operational efficiency for telecom providers but also enhances the customer experience by offering services that are tailored to individual needs and preferences.

IoT Services Expansion

The growth of IoT services is another critical aspect of telecom convergence. As IoT devices proliferate, telecom networks become increasingly vital for supporting the data they generate. This expansion is evident in smart homes, where appliances are interconnected for enhanced convenience; smart cities, which leverage IoT devices for traffic management and energy conservation; healthcare, where wearable devices monitor patient health in real time; and industrial automation, where IoT devices streamline manufacturing processes.

5G as a Facilitator

5G technology is built on a foundation of technological advancements that enable higher speeds, lower latency, and increased connectivity. These include massive MIMO (Multiple Input Multiple Output), which significantly increases network capacity and efficiency, and network slicing, allowing operators to create multiple virtual networks within a single physical 5G network.

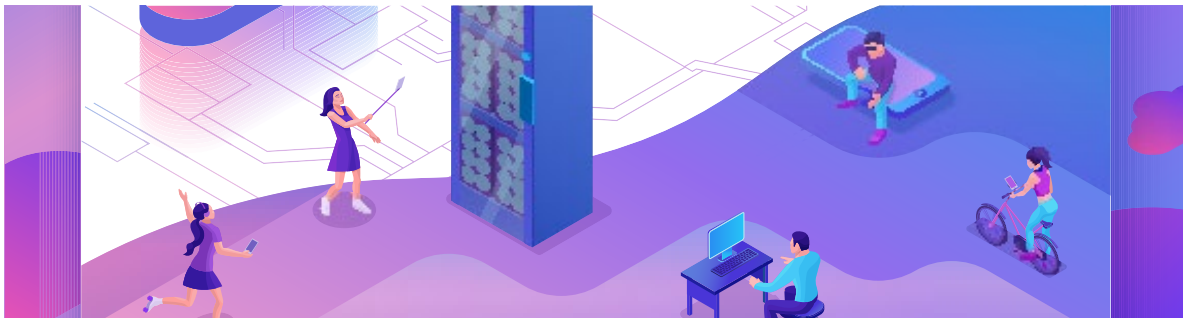
By providing a more capable and flexible network infrastructure, 5G supports the seamless integration of mobile, broadband, AI, and IoT. This integration fosters the development of new applications and services, such as augmented reality (AR) experiences that require high bandwidth and low latency, and autonomous vehicles, which depend on ultra-reliable communication for safety.

Transformative Impact and Newfound Opportunities

As the lines between service offerings continue to dissipate, telecom providers are presented with the opportunity to strategically reposition themselves from being mere connectivity providers to becoming central players in a broader ecosystem of digital services and comprehensive solutions.

The commoditization of voice and data services has pushed these providers towards innovative as-a-service offerings, capitalizing on their network capabilities to deliver value-added services. Data monetization has emerged as a key strategy in this new landscape. By leveraging the vast amounts of data flowing through their networks, telecom companies can offer targeted advertising, predictive analytics services, and more, creating new revenue streams.

What's more, the emergence of collaborative partnerships with content providers has opened up new avenues for delivering bundled services. These partnerships allow telecom companies to offer a richer, more diverse array of services, from streaming video and music to gaming and virtual reality experiences. This not only enhances the value proposition for customers but also fosters a more competitive and dynamic telecom ecosystem.



Enabling Telecom Convergence through Flexible, End-To-End Solutions

The integration of these technologies enables a level of service personalization and convenience previously unattainable, and allow telcos to deliver on the promise that's at the heart of convergence: an enhanced customer experience. These diverse and integrated service offerings require a flexible and scalable billing and operational support systems (B/OSS). A comprehensive, cloud-based solution enables providers to achieve unified management, flexible integration, and forward-thinking problem resolution – all working towards building a better customer experience.

IDI Billing Solutions stands at the forefront of providing end-to-end, cloud-based billing and OSS solutions to streamline the complexities of telecom convergence and offer telcos a significant strategic advantage. Our comprehensive approach integrates all aspects of billing, customer relationship management, and network operations, providing a seamless backend infrastructure that is crucial for managing the multifaceted nature of modern telecommunications services, and offering many benefits, including:

Operational Efficiency & Agility

By consolidating disparate systems and processes into a single, cohesive platform, telecom companies can streamline their operations, reduce redundancy, and eliminate the inefficiencies associated with managing multiple, siloed systems.

Personalized Customer Experiences

By integrating data from various sources, telecom operators gain deeper insights into customer usage patterns and preferences, allowing for more personalized service offerings and billing options.

Discovering Data Insights

With the vast amounts of data generated by modern telecom services, IDI's end-to-end solution can analyze this data to gain insights into customer behavior, network performance, and service usage patterns. These insights can inform strategic decisions and drive improvements in service delivery.

Heightened Security and Compliance

By centralizing data and processes, IDI's holistic solution can better safeguard sensitive information and ensure that telecom companies meet the stringent regulatory requirements of the telecommunications industry.



As telecom companies explore the vast potential of convergence, they will find that solutions like those offered by IDI Billing Solutions are crucial in enabling their success. Encouraging telecom companies to explore how our solutions can support their convergence strategies and enhance customer experiences is more than just a call to action—it's an invitation to be at the forefront of the telecommunications revolution.



Ready To Build A Better Experience? Talk To IDI Today.

Through innovative technology, people, partners, and systems, IDI is committed to providing a highly secure, world-class, cloud-based B/OSS platform that delivers the freedom and flexibility to streamline operational efficiency, monetize services, automate operations, and seamlessly scale as your business demands.

To learn more, call us at **888.924.4110**, or contact us at **idibilling.com**.